



*New Zealand Foundation for*  
**CONDUCTIVE  
EDUCATION**  
MAXIMISING THE ABILITY IN DISABILITY

P.O. Box 9230 Tower Junction, Christchurch • Phone 0800 169 323 or 0277 169 323  
Web: [www.nzfce.org.nz](http://www.nzfce.org.nz) • Email: [sally@nzfce.org.nz](mailto:sally@nzfce.org.nz) • Facebook: [www.facebook.com/NZFCE/](http://www.facebook.com/NZFCE/)

## From the National Coordinator, Sally Thomas



Welcome to our autumn newsletter for 2023! As you will read, it has been a great start to the year for our affiliates.

### Whaikaha

The Board met in Wellington in March and were pleased to be able to connect with Paula Tesoriero, Chief Executive of Whaikaha (Ministry for

Disabled People) and Amanda Bleckmann, Director of Services. This was an opportunity to be up-dated on the priorities for this new Ministry as they move towards an environment that will see more choice and control sitting with disabled people and the need to balance this with safe-guarding people.

### Upstream

We are pleased to reap the rewards of our relationship with Upstream with some funds starting to trickle in. This collaboration has huge potential for Conductive Education – so please check out their website [www.upstream.co.nz/](http://www.upstream.co.nz/), use their suppliers (or become a supplier!) and tick the NZFCE box so that any contribution generated through the arrangement will come to support CE.

### Professional Registration

We are delighted to see Renata Toth, Conductor at Conductive Education Taranaki Trust become registered under the NZFCE Conductor Professional Standards. Well done Renata!



## Holiday Programme

We had an exciting start to 2023 with our first Conductive Education Holiday programme being held in Christchurch. Feedback was positive and we will continue to offer this option for individuals and whānau. Please make contact if you are interested.

## Sad News

On a sadder note, we were very sorry to learn that Astrid Sydow, Associate Principal and Manager of Harakeke, our Conductive Education Unit at Addington Te Kura Taumatua resigned at the end of term 1. Astrid has been supporting Conductive Education for 25 years and has been instrumental in the lives of literally hundreds of children and their whānau. She has also been very generous in supporting staff in our other school settings. Thank you so much Astrid for all that you have contributed to Conductive Education at Addington!



## Our Supporters

Once again, I would like to acknowledge our wonderful supporters – Independent Fisheries, Lotteries, Kiwi Gaming Foundation, Pub Charity and the CJB Norwood Trust for your generosity this year. Your continued support is much appreciated.

## Conductive Education Taranaki

Our community has grown a lot recently. With 28 kids currently enrolled in Conductive Education sessions, 9 in Early Intervention, 15 rangatahi and three adults doing Video Game Rehabilitation, and 12 kids coming to our inclusive Playgroup, we're quite the hive of activity these days. But while we're always doing new and interesting things, the philosophy of Conductive Education remains at the heart of everything we do.

## Club R&R 2023

It was our 5th camp this year, and our first ever *Staycation* for the 40 kids who came along. We made the most of everything that our Westown (Bestown) school has to offer, with a hāngī, camping, archery, athletics, tabloid sports, soundscapes, a beach dig, a boat ride and lots of cool crafts. We were so proud to see every single child have a go at rock climbing – how's that for maximising abilities? The kids had lots of great playtime together, giving them opportunities to build on the friendships they make in their Conductive Education sessions. Camp is always a great time for whānau to connect, too. This year the parents and caregivers baked bread and the dads got to hang out with a brew and a beard trim – is there a better way to bond?

## Getting out and about

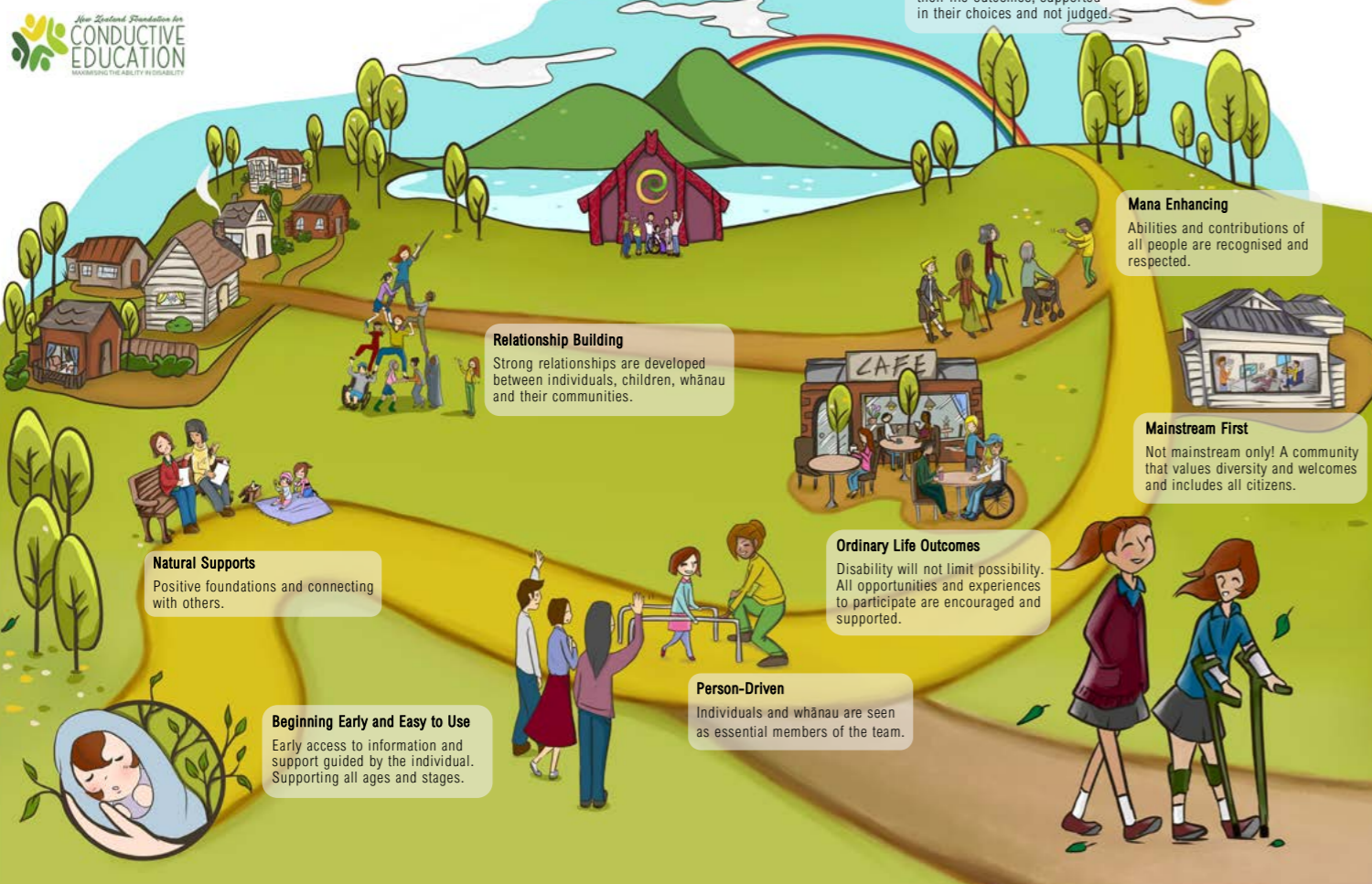
Thanks to support from Tū Manawa Active Aotearoa, we've been a very active bunch lately. We've been canoeing, trampolining, and letting loose in an indoor play area. In February, with the help of Surfing Taranaki HQ and Parafed Taranaki, as well as some very talented volunteers, our kids got to have a go at surfing.



## New Workshop

Renata's *Power to Empower* workshop is a hands-on workshop for teachers and people who work in disability support to experience the difference it makes when we slow down, give a child our full attention, and do things "with" and not "to" a child. Care moments (eating, drinking, dressing) become a chance for us to connect, be present, and build trusting relationships, and they're rich in opportunities to empower kids to become more independent.

## CONDUCTIVE EDUCATION - ENABLING GOOD LIVES



FROM THE CENTRES



## Conductive Education Canterbury

The past few months since our last newsletter contribution have been busy and filled with celebrations!

We enjoyed being able to connect and celebrate our 30th Anniversary with our community in November. Over 250 past and present, families, staff and supporters joined us for an afternoon of catching up – it was like a family reunion and wonderful to see everyone. One of the things that makes CEC unique is that many of the parents and children we have supported over the years have developed lifelong friendships with one another. Once a family makes a connection with CEC they are part of our whānau for life and this is a great strength of our organisation. We believe that it is because we were started by parents, for parents and that is still reflected today in our governance committee and by our volunteers and staff.



We also were fortunate to host four of the wāhine from the Black Ferns shortly after their success in winning the Women's Rugby World Cup – Kendra Cocksedge, Amy du Plessis and Chelsea and Alana Bremner, who spent the morning at CEC with their medals and the Rugby World Cup Trophy "Nancy". The wāhine were so generous with their time and were terrific with all of our tamariki and whānau sharing in their success. This event also attracted some great media coverage as well from Stuff <https://bit.ly/3mGeyZW>

Our plans are well under way for the building of our second accessible home – we have consented plans currently being priced and we are excited to be partnering with Placemakers Christchurch for the build. It is hoped that the build will commence shortly as there are several young people looking forward to moving into their new home. I look forward to sharing the developments in the next NZFCE newsletter!

–Ngā mihi nui, Rebecca



As an organisation we have adapted and evolved and have been responsive to the ever-changing world we live in. At present we support 40 whānau and have 14 staff members, along with many volunteers. In 2023 CEC now offers a variety of programmes and serves tamariki and whānau with varying diagnoses and additional needs. We have a range of specialist staff on the team including Conductor, Early Intervention Teachers, Education Support Workers, Speech Language Therapists, Physiotherapist, Family Support Coordinator, Occupational Therapist and administration staff.

2022 was a big year for media coverage for CEC in November. Seven Sharp ran a story on the 30th Anniversary the link can be found on our website for anyone interested or here [https://youtu.be/wst5MYGEX\\_M](https://youtu.be/wst5MYGEX_M)

## GlowKids

*Tenā kotou katoa greetings from Tamaki Makaurau,*

*Wawata (Aspiration): Ko te pae tawhiti, whāia kia tata; ko te pae tata, whakamaua kia tīna – Seek out distant horizons and cherish those you attain.*

What a start to the year we had here in Tamaki Makaurau, flooding, cyclones, and a summer that can best be described as "what summer?" Our GlowKids' team has done an amazing job throughout, and in fact we extended our Sensory Kindy classes which now opens 5 days per week.

Bianka, our new Conductor, arrived in November 2022 and has settled in extremely well. It is great to have our CE Kindergarten class up and running again. Tessa, our Head teacher, works alongside Bianka in this space and it's wonderful to see the new learnings taking place. We must also mention Gabi, our other Conductor, who has made a significant impact with a group of children that she works with. Seeing our children weekly becoming more and more mobile, it has been known to get the happy tears flowing. Gabi and Bianca, we thank you for the gift that you share!



Recently the Kindergarten groups at GlowKids went on an excursion to Butterfly Creek. This is the first outing we have had since 2019, and it was a resounding success. The GlowKids' team were joined by parents, and there were lots of new experiences for some of our children. Another positive was the opportunity it provided for parents to meet outside of the usual pick up and drop off setting. It's always good to have the space to meet others who are on a similar journey.



Extending our days and hours in the Sensory Kindergarten has also brought about a new circle of support which happened quite organically. The tuakana-teina relationships (older-younger) amongst our children has been very evident, and it's great to see this developing amongst our children by becoming more engaged with their peers.

A big shout out to one of our supporters, *Music Helps*, for funding one year of music therapy. As they say it takes a community.

–Ka kite anō from the GlowKids' team

## Conductive Education Woodstock

Wow, term 1 has really flown by. We have been lucky enough to have new families join us, making for a very busy but fun-filled term. Not only have we had new families start but also new staff, including a part-time teacher who comes with lots of ECE experience and valuable ideas.

The most exciting thing to happen this term is that we have had a lift put into our school hall, after many years of waiting. Now our students in wheelchairs are able to access the stage! It was so amazing to see our first student wheeled onto the stage to get their certificate with the rest of the children.

We began the term by swimming in our school pool. Once the weather warmed up a bit we were able to build on our water confidence and safety. A few of the children who were reluctant to get in the water, in the beginning, were the last to get out by the end of the swimming season.

This year we have also been running a weekly cooking program. The benefits of this are huge for all the children involved. Not only does it cover critical curriculum areas (Reading, Writing and Maths) but valuable life skills. This is what we are all about. Many of our children, due to sensory needs, find eating difficult. This may be because of texture, smell, or colour. One of our children is only just learning to eat after being fed through a mickey button for most of his life. He has been trying so many new textures and tastes and has got quite upset the few times we have had to miss the session.

As the term winds up we are busy with IEP meetings. This is such a great time to meet with families, celebrate successes and set new learning goals.

–Bronwyn and the team



## Adult Conductive Education Trust

*Kia ora koutou.* What an end to 2022 and a start to 2023 it has been for the team at ACET. The end of 2022 saw our board busy fundraising and attending Christmas markets. Thank you to Bernard Parsonage who assisted us in getting the baskets to sell at these markets. Also, a massive thank you to our board and to those who supported this fundraiser. We were able to see out the year together at our end of year party. It was a special time to remember our dearly loved friend Charlie who we lost earlier in the year. Charlie's family donated a cup in his memory with the first recipient being Mark Wales, recognised for his contribution as client representative on the ACET board. Mark has done a sterling job of ensuring that the voice of the people we serve is loud and proud, with a big focus on social and fun activities! Congratulations Mark.



2023 saw us welcoming two new members to our team, Meagan Dunston and May Clulee. Their contribution allows us to grow our programmes and expand what we are able to offer our people. Meagan is our new Speech and Language Therapist, joining our Friday programme. Meagan will be familiar to those that attend the Conductive Education unit at Addington School. Our people are able to be supported with their communication devices and over the lunch break to interact and respond to those around them and their environment. This term we have started a Music and Movement session on a Wednesday, supported by May from the Southern Music Therapy team. Being on site of the Braintree Wellness Centre has allowed us to develop a relationship with Southern Music Therapy who operate out of the wellness centre.



We are excited with where we are heading in 2023. Our sessions are filling up as we have people interested in joining as they transition from high school into the community. We also plan to be out and about in the community, attending expos to share with these young people what their options are as they head out into the wider world. Our board has been working hard on developing our Strategic Plan as we move forward and into the future. Our focus for the next two years is to continue to develop and grow ACET, supporting our people and their whānau, while working within sound structures.

Finally, we would like to thank our generous contributors: our Staff, Board Members, Volunteers and ACET whānau; Lottery Community Fund; COGS; and The Lion Foundation. Without their contributions we would be unable to run our programmes.

–Thank you from the crew



## Addington Te Kura Taumatua

Our first term back at school in Harakeke has concluded with dollops of joy and wee bit of sadness as Astrid Sydow (our Associate Principal in Conductive Education) was farewelled after being a part of our incredible team for 25 years.

Astrid has been a courageous leader, staunch advocate, support colleague, passionate believer, loved teacher and a very special whānau member to so many of our Conductive Education families over the years. Whether it be leading and walking alongside families through national disasters, pandemics, tragedies and sadly for some the loss of very precious little lives. She has maintained a place of shelter, consistency and calm for our most treasured students and their families. A place where fun in learning are priorities and success should be shared and celebrated.

So when it came time to farewell this amazing educator and friend it was no surprise that the team decided to celebrate her love of horses with all the incredibly rich sensory experiences the students in Harakeke love. It was lovely to see so many of our

extended families attend as well as former staff and well wishes sent from former students.

The students had worked so hard at keeping it all a surprise baking a chocolate cake complete with icing delicately 'hoof marked' on top. On the day the students got to pin the tail on the horse, show their strength and determination by whacking at the horse pinata, there was face painting, their favourite songs, picnic gazebos in the sunshine with ribbons and balloons galore. It was a very special afternoon.

On behalf of all of us at Addington Te Kura Taumatua and the NZFCE we wish Astrid the very, very best as she takes the time to repair, restore and refresh after fighting so hard against the debilitating effects of Long Covid. But we are pretty sure she will be a regular visitor and we will see her again soon... you can't stay away from the love and joy in Harakeke for long.

Kia hora te marino, kia whakapapa pounamu te moana, kia tere te kārohirohi i mua i tō huarahi.

*May peace be widespread, may the sea glisten like greenstone, and may the shimmer of light guide you on your way.*

—Donna Buchanan, Principal



## Te Pukenga Cashmere High School

Kia ora everyone. Te Pukenga Cashmere High School has had a wonderful start to the year, with Tüнди Szekeres, Conductor, joining the team. Tüнди hails from Hungary, full of energy. In 2022 Tüнди spent a portion of Term 4 with us getting to know the students, staff, and families. We were able to trial our Specialist Practice Manual with Tüнди, which helped to ensure a thorough induction process for Tüнди by the time she started with us in 2023.

This year we have a number of our students working with Tüнди. She has spent time getting to know the students allowing her to craft and create a range of programmes to support their holistic learning and wellbeing.

The Te Pukenga team continues to grow in their knowledge of Conductive Education with guidance from Tüнди, which means the staff can continue to support the students to do their best in all aspects of their daily school life.

We would like to thank the NZFCE and Sally Thomas for their support of Tüнди and her transition to our team at Te Pukenga Cashmere High School.



## Te Pā Haraeka, Naenae Primary School

*Kia Ora Koutou* from Te Pā Haraeke.

This term has flown by and it's hard to believe that we are in Easter week. A number of our ākonga returned to school with health challenges in February and so for the first half of the term a lot of time was spent supporting whānau with health professionals.

We have been able to extend the number of ākonga that attend classes in the mainstream for part of the day. This has been working extremely well with the ākonga who are ready for this step and next term we will have another child begin this and the amount of time spent in the mainstream will increase for some others. At the same time, some of the ORS ākonga who are mainly in the mainstream have been spending more time accessing some of our programme in Te Pa Haraeke. It is wonderful to have the flexibility to be able to do this.

Clare has created a wonderful programme for the term and one afternoon each week we now have a role play time. In the attached photo Kiana is the vet checking out the animal that Fawn has brought to the vet clinic. We are building up our set of dress ups and this is a time everyone looks forward to. We have a blue mat time (welcome to each ākonga) each day, a red mat time (literacy) three times a week and star mat



(mathematics) twice a week. In the photo Pauline is taking a red mat session.

We have employed a new music therapist and the ākonga are enjoying her sessions. Last term we invited the local Bupa dementia unit, where the music therapist also works, to join us for morning tea and a music session. This worked extremely well and so we have decided to do this once every term. Unfortunately we had too many bugs and had to cancel this at the last minute, this term but we are looking forward to it happening next term.

We wish everyone a happy Easter and a restful break.  
– Ka kite ano. Naenae Conductive team

## Conductive Education Waikato

This term has gone really quickly for the Team at CE Waikato. We have had a number of changes this term, the biggest being the start of our Sensory Kindy. After a visit to Glow Kids (thanks Sonya and team!) we identified that we could meet the needs of our tamariki with sensory needs better. So we changed our environment and put together a new curriculum and ran with it. The children have thrived and we are really keen to support the ongoing development of this aspect of our service.

Conductive Education Waikato hasn't been able to employ a Conductor to be with us, but we are really lucky that NZFCE are supporting us to have Bori visit to work with our tamariki and to be available as an ongoing resource for us. We have developed a good system to make this Conductor input work as well as possible and we look forward to working with Bori through the year/until we have a new Conductor.

With Chinese New Year during the term, one of our Education Support Workers, Shu-Mei, came in with her daughter to work with the tamariki to celebrate the

year of the rabbit. She taught the children how to fill and roll dumplings and showed the tamariki how to use ink and brushes to write calligraphy. The children enjoyed using the ink and brushes and decorating their own rabbits while learning about Chinese New Year.

–Ngā mihi, Vicki and the team



## Neuro Connection – Brian Kettle

Let us introduce you to Brian.

Brian has been part of the Neuro Connection family since February 2022, having joined us a year after his stroke. He enjoys attending two classes a week and we want to share a little about Brian's hobby.

From a jewellery background, Brian has always had a keen eye for detail – he began making models during the lockdown to starve off some of the boredom.

Despite the fact that Brian has experienced some mobility set backs with his stroke, his determined (and partner Susan would say stubborn) nature means that Brian finds every which way to adapt. Having lost most

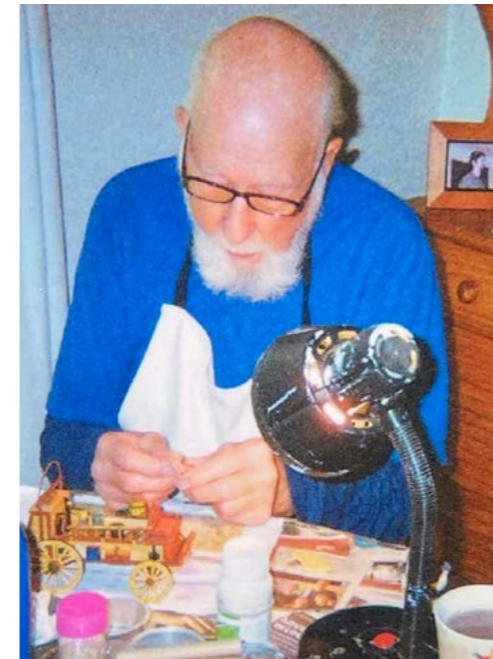
of the use of one arm, he has not let that stop him from tinkering away.

He started putting together modelling kitsets, but really enjoys the challenge of making his own items from scratch.

Pictured is the first model that Brian made following his stroke—entirely 'one armed' and he made it from scratch based on a picture in a magazine. This is a façade of a shed that is built into a retaining wall.

Brian is living proof that it's important to keep enjoying what you can, despite challenges. Having a hobby is a great way to keep your mind active, starve of boredom plus you get to experience a sense of satisfaction once you have completed something.

–From the team at Neuro Connection



## Conductive Education Wellington

What a busy few months we have here at Conductive Education Wellington Trust. We currently have 17 children enrolled in our daily sessions and 2 in our after school sessions. We have two children beginning their transition to school in term 2.

We have 2 new volunteers who have joined the team one day a week and they are enjoying their time here getting to know the children and learning lots of things from the staff.

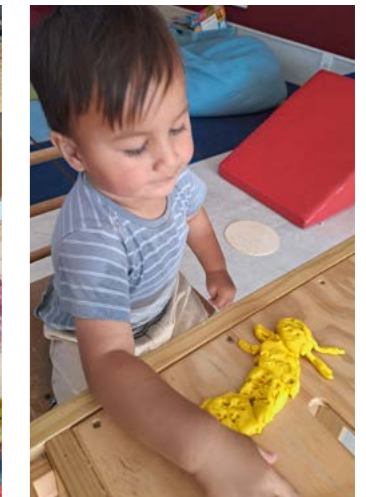
We have had two heat pumps installed in the main room of the centre and this has made such a huge difference to the temperature of the centre in the mornings. The heat also flows well into the other room, however we will look in the future of installing one pump in the other room.

Our new safety matting looks wonderful out on the deck and the children are enjoying the slide that was donated by a family who have

since moved away from the area. The staff did an amazing job purchasing it and laying it down in the holidays.

This term we looked at exploring the colours of the Rainbow! Each week celebrated each colour by looking for objects out on our walks and also fun activities. Throughout this term we all also looked at using simple words in Te reo Māori (kupu) to reflect each week's practices. Our focus was guided by the book *Nanny Mihi and the Rainbow*.

–Kathy and the team



## OUR MAJOR SUPPORTERS



**Lottery Grants Board**  
Te Puna Tahua  
LOTTO FUNDS FOR YOUR COMMUNITY

**KIWI GAMING**  
FOUNDATION LTD  
local gaming - local funding

**Pub Charity**  
Limited



**upstream**

**THE LION FOUNDATION**

**CJB  
NORWOOD  
TRUST**

## NZ FOUNDATION FOR CONDUCTIVE EDUCATION

### **N.Z. Foundation for Conductive Education (NZFCE)**

Chairperson Rebecca Courtney  
National Coordinator Sally Thomas  
P.O. Box 9230, Tower Junction  
22 Brougham Street, Christchurch, 8024  
Ph: 0800 169 323 or 0277 169 323  
Email: sally@nzfce.org.nz  
Web: www.nzfce.org.nz  
Facebook: www.facebook.com/NZFCE

### **Conductive Education Southern** (all ages)

198 Esk Street  
Invercargill 9810  
Ph: 03 218 8766  
Email: manager@cesouthland.org.nz

### **Addington Te Kura Taumatua Conductive Education**

(primary school children)  
22 Brougham Street, Christchurch  
Ph: 03 366 2909 Fax: 03 365 8940  
Email: principal@addington.school.nz  
conductive.education@addington.school.nz  
Web: www.addington.school.nz

### **Conductive Education Canterbury Early Intervention Unit**

(pre-school children)  
22 Brougham Street, Christchurch  
PO Box 9230, Tower Junction  
Ph: 03 372 1399 Fax: 03 372 1499  
Email: cecanterbury@xtra.co.nz  
Web: www.cecanterbury.org

### **Cashmere High School Conductive Education**

(secondary school aged students)  
172 Rose Street, Christchurch 8024  
Ph: 03 332 9129 Fax: 03 332 9126  
Email: wbj@cashmere.school.nz  
Web: www.cashmere.school.nz

### **Adult Conductive Education Trust (ACET) Christchurch**

(Conductive Education for adults)  
PO Box 9329, Tower Junction, Christchurch  
Ph: 03 372 1399  
Email: office@acet.org.nz

### **Wellington Conductive Education Early Childhood Centre**

(pre-school children)  
PO Box 35 078, Naenae 5041  
Ph: 04 577 3480 Fax: 04 577 3480  
Email: cewt@xtra.co.nz  
Web: www.cewellington.org.nz

### **Naenae Primary School Conductive Education**

(primary school children)  
Wheatley Street, Naenae, Wellington  
Ph: 04 567 8117 Fax: 04 567 8771  
Email: conductive@naenae-primary.school.nz  
Web: www.schoolground.co.nz/naenaeprim

### **Conductive Education Taranaki** (pre-school and school age children)

Westown School  
Sanders Avenue, New Plymouth  
Ph 06 929 3504  
Email: rachel@conductivetaranaki.org.nz  
Web: www.conductivetaranaki.org.nz

### **Conductive Education Waikato Trust Early Intervention Unit**

(pre-school children)  
Fairfield Road, Hamilton 3214  
P.O. Box 12066, Chartwell Sq., Hamilton 3248  
Ph: 07 855 7013 Mob: 027 855 7014  
Fax: 07 855 7014  
Email: cewaikato@xtra.co.nz  
Web: www.conductiveeducationwaikato.nz

### **Woodstock Primary School Conductive Education**

(primary school children)  
Fairfield Road, Hamilton 3214  
Ph: 07 855 6686 Fax: 07 853 7056  
Email: bronwynn@woodstock.school.nz  
Web: www.woodstock.school.nz

### **GlowKids**

(pre-school children)  
13 Coyle Street, P.O. Box 16291  
Sandringham, Auckland 1351  
Ph: 09 845 8070  
Email: info@glowkids.org.nz  
Web: www.glowkids.org.nz

### **Neuro Connection Foundation**

(Conductive Education for adults)  
2 Claude Brookes Drive, PO Box 21 504  
Henderson, Waitakere City 0650  
Ph: 09 836 6830 Fax: 09 836 6832  
Email: admin@neuroconnection.org.nz  
Web: www.neuroconnection.org.nz